

1 Word Search

W	P	O	C	O	M	P	O	S	I	T	I	O	N
G	A	S	A	P	A	I	N	T	I	N	G	I	O
E	T	W	N	T	R	G	U	E	Y	A	F	L	D
P	T	E	V	A	C	M	S	E	B	C	A	I	R
H	E	O	A	R	S	E	C	P	A	G	R	F	A
B	R	U	S	H	A	N	U	F	R	A	M	E	W
K	N	P	I	A	R	T	L	U	T	L	Z	A	I
A	S	A	E	Q	T	O	P	D	I	L	O	S	N
F	F	P	Y	Z	I	S	T	E	S	E	P	E	G
E	Y	E	M	U	S	E	U	M	T	R	N	L	U
N	O	R	T	K	T	T	R	E	Y	Y	R	A	L
D	P	A	L	E	T	T	E	Q	K	C	O	G	Y

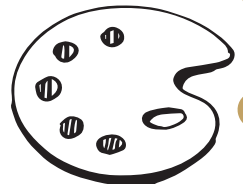
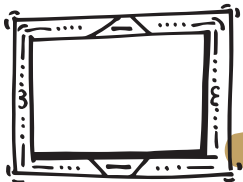
How many art-related words can you find in the magic square? (If you find any unknown words, look them up in your dictionary!)



- ART | OIL
- BRUSH | EASEL | FRAME | PAPER
- ARTIST | CANVAS | MUSEUM
- DRAWING | GALLERY | PALETTE
- PATTERN | PIGMENT
- PAINTING
- SCULPTURE
- COMPOSITION

2 Word Match

Match the words with what you see in the painting by connecting them with lines.



- ARTIST
- BRUSH
- CANVAS
- COMPOSITION
- EASEL
- FRAME
- GALLERY
- PAPER
- OIL PAINTING
- PALETTE
- PIGMENT
- SCULPTURE



Frans Francken II
Christ in the Studio (Pictura Sacra) (detail)
 ca. 1616-1620



Frans Francken II
Christ in the Studio (Pictura Sacra (detail))
ca. 1616-1620

Who is SCULPTING CLAY in the picture?!"

www.mfab.hu/artworks/christ-in-the-studio-pictura-sacra